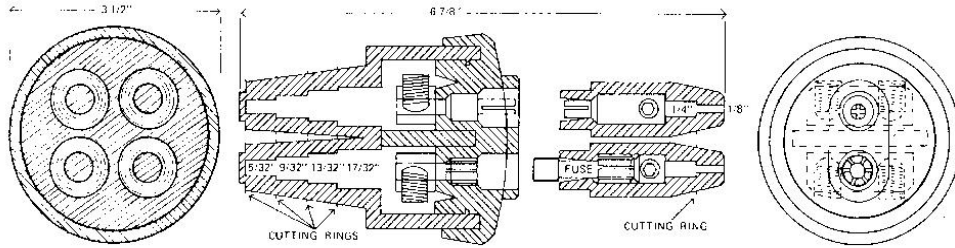


SEC Combination Fused/Pin Connector Kit

Model SEC 1791-FP

For Copper or Aluminum Stranded Wire

Combination fused/pin quick disconnect kit for low voltage copper or aluminum conductor cables. Recommended for street, highway, and flood lighting in outdoor locations in either wet or dry areas. Model SEC 1791-FP kits were specially designed for use in 110 volt systems using the pin side for the negative phase and the fused side for the positive phase or on a 280/480 volt system where only one phase requires fusing. SEC fused/pin kits are designed to splice up to four conductors from number 10 to 2/0 stranded on the line side and from number 12 to 4 stranded on the load side. Conductors can be removed and reinstalled. Any standard midget, ferrule-type fuse (except glass tube) may be used in this connector kit. Fuse dimensions are 13/32" diameter by 1-1/2" length. SEC fused connectors are designed for 600 volts or less. Maximum fuse rating for this unit is 30 AMP.



Listed
Combination Fused/Pin Connector Kit
9D70

REQUIRED TORQUE INCH / POUND

Parts Lists	
SEC 1791-FP	Combination Fused/Pin Kit Complete
SEC 1791-1	Splice Box Body
SEC 1791-DF-1	Double Fused/Pin Splice Box Cap
SEC 1791-DF-2	Line Fuse Holder
SEC 1791-DP-1	Line Pin Unit
SEC 1791-DS-3	Load Fused/Pin Body (2 per Kit)
SEC 1791-DS-4	Load Fuse Holder
SEC 1791-DSP-1	Load Pin Unit
SEC 1791-DF-5	Connector Lug Assembly (2 per Kit)

CAT NO.	WIRE SIZE	WIRE TYPE	WIRE DIA RANGE (IN)	CUTTING RANGE NO.	TORQUE (IN-LBS)
SEC 1791-1 0791-1-DF-5	1	THWN, THHN, XHHW-2	7/16	2	120
	1	USE-2, RHW, RHH, THW	31/64	3	120
	1/0	USE-2, RHW-2, RHH, THWN, THNN, THW, XHHW-2	17/32	3	120
	2/0	USE-2, RHW-2, RHH, THWN, THNN, THW, XHHW-2	37/64	3	120
SEC 1791-DS-3	8	RHH, RHW-2, THW, TW, USE-2, XHHW	15/64	1	60
1791-DPS-1	6	RHH, RHW-2, THHN, THW, THWN, USE-2, XHHW-2	19/64	1	60
1791-DS-4	4	THHN, THW, THWN	5/16	1	60
	4	RHH, RHW-2, USE-2, XHHW-2	23/64	2	60

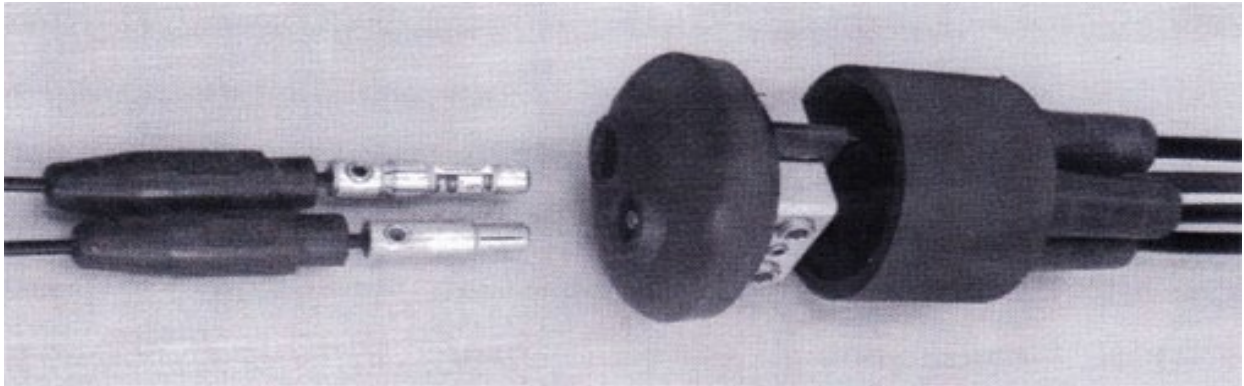
CAT NO.	WIRE SIZE	WIRE TYPE	WIRE DIA RANGE (IN)	CUTTING RANGE NO.	TORQUE (IN-LBS)
SEC 1791-1, 1791-DF-5	8	RHH, RHW-2, THW, TW, USE-2, XHHW	15/64	1	100
	6	RHH, RHW-2, THHN, THW, THWN, USE-2, XHHW-2	19/64	1	115
	4	THHN, THW, THWN	5/16	1	115
	4	RHH, RHW-2, USE-2, XHHW-2	23/64	2	115
	3	THHN, THWN	11/32	2	120
	3	THW	3/8	2	120
	2	RHH, RHW-2, THHN, THW, THWN, USE-2, XHHW-2	13/32	2	120

Ordering Instructions

The Same kit will fit most conductor sizes from number 10 to 2/0 on line side and 12 to 4 on load side either copper or aluminum, stranded wire. One kit will splice four conductors on line side and provide one fused and one pin phase on the load side.

INSTALLING SEC FUSED/PIN CONNECTOR KIT

1. Select segment size a minimum of 5/64" smaller than outside dimensions of insulation on conductors. Cut segment to be used at cutting ring with sharp knife. Cutting may not be required on fused holder for small size conductors. (See illustration for cutting ring dimensions.)
2. Apply silicone lubricant (provided in kit) on conductor and segment opening. Conductors must be clean and free of foreign materials.
3. Insert conductors through opening of segments approximately six inches beyond end of splice box body and fuse holder body.
4. Trim insulation from conductors the length of lugs and attach to lug assemblies, tighten lug assembly according to inch pounds chart.



5. Apply silicone lubricant to inside of segment (splice box body) around conductors.
6. Push cap lug assembly and conductors into splice box body and check for proper seating. Cap and body must be clean and free of foreign material for proper seal. Do not lubricate splice box cap seal ring inside seal ring of splice box body.
7. Using dowel provided, push fuse holder and conductor back into fuse body.
8. Install midget fuses and plug fuse body into cap of splice box cap. Apply silicone lubricant to fuse and pin body to eliminate rubber friction.
9. It is recommended that conductors be taped or tie-wrapped from four to six inches from base of splice box for better installation. Although not required, electrical tape can be placed around outside rim of splice box body for double protection. SEC double-fused connector kits will provide a watertight connection that can be disconnected and reused.

